

**RAJASTHAN ELECTRICITY REGULATORY  
COMMISSION**

**ANNUAL REPORT  
2016-17**

Vidyut Viniyamak Bhawan, Near State Motor  
Garage, Sahakar Marg, Jaipur - 302001

Phone: 0141-2740067, 2741016 Fax: 0141-2741018, E-mail: [recjpr@yahoo.co.in](mailto:recjpr@yahoo.co.in)

Website: [www.erc.gov.in](http://www.erc.gov.in)

# **RAJASTHAN ELECTRICITY REGULATORY COMMISSION**

## **Annual Report**

**FY 2016-17**

### **Chapter – I : General**

The Rajasthan Electricity Regulatory Commission (RERC) is constituted with the following:

Shri Vishvanath Hiremath	Chairman
Sh. Vinod Pandya	Member (Finance)
Sh. Raghuvendra Singh Rathore	Member (Technical) (from 1.4.2016 to 14.12.2016)
Sh. Rajendra Prasad Barwar	Member (Technical) (from 10.2.17 to 31.3.2017)

During the year, Sh. G.K. Sharma worked as Secretary from 1.4.2016 to 11.12.2016 & Sh. A.K. Joshi, Joint Director (Finance), worked as Secretary from 12.12.2016 to 31.3.2017.

The organization chart of the Commission is placed at Annexure –'A'

#### **1. Functions of State Commission.**

As per the Section 86 of the Electricity Act, 2003, the State Electricity Regulatory Commissions are required to discharge the following functions:

- (1) The State Commission shall discharge the following functions, namely:--
  - (a) determine the tariff for generation, supply, transmission and wheeling of electricity, wholesale, bulk or retail, as the case may be, within the State;
  - (b) regulate electricity purchase and procurement process of distribution licensees including the price at which electricity shall be procured from the generating companies or licensees or from other sources through agreements for purchase of power for distribution and supply within the State;
  - (c) facilitate Intra-State transmission and wheeling of electricity;
  - (d) issue licences to persons seeking to act as transmission licensees, distribution licensees and electricity traders with respect to their operations within the State;
  - (e) promote cogeneration and generation of electricity from renewable sources of energy by providing suitable measures for connectivity with the grid and sale of electricity to any person, and also specify, for purchase of electricity from such sources, a percentage of the total consumption of electricity in the area of a distribution licensee;
  - (f) adjudicate upon the disputes between the licensees and generating companies and to refer any dispute for arbitration;
  - (g) levy fee for the purposes of this Act;
  - (h) specify State Grid Code consistent with the Grid Code specified under clause (h) of sub-section (1) of section 79;
  - (i) specify or enforce standards with respect to quality, continuity and reliability of service by licensees;
  - (j) fix the trading margin in the intra-State trading of electricity, if considered necessary; and
  - (k) discharge such other functions as may be assigned to it under this Act.
- (2) The State Commission shall advise the State Government on all or any of the following matters, namely:--
  - (i) promotion of competition, efficiency and economy in activities of the electricity industry;
  - (ii) promotion of investment in electricity industry;
  - (iii) reorganization and restructuring of electricity industry in the State;
  - (iv) matters concerning generation, transmission, distribution and trading of electricity or any other matter referred to the State Commission by that Government;
- (3) The State Commission shall ensure transparency while exercising its powers and discharging its functions.

- (4) In discharge of its functions, the State Commission shall be guided by the National Electricity Policy, National Electricity Plan and Tariff Policy published under section 3 of the Electricity Act 2003.

## Chapter –II: Distribution System

### 1. Reforms in the Power Sector:

As a part of the reform process, 5 number of Companies were constituted on 19<sup>th</sup> July 2000. In Distribution Sector, Jaipur Vidyut Vitran Nigam Ltd., Ajmer Vidyut Vitran Nigam Ltd. & Jodhpur Vidyut Vitran Nigam Ltd. were constituted.

#### Jurisdiction of the Three Distribution Companies:-

Sl. No.	Particulars	Jaipur Discom	Ajmer Discom	Jodhpur Discom	Total
1	Geographical Area	1. Alwar 2. Baran 3. Bundi 4. Bharatpur 5. Dholpur 6. Dausa 7. Jaipur 8. Jhalawar 9. Kota 10. Karauli 11. Sawai Madhopur 12. Tonk	1. Ajmer 2. Banswara 3. Bhilwara 4. Chittaurgarh 5. Dungarpur 6. Jhunjhunu 7. Rajsamand 8. Sikar 9. Udaipur 10. Pratapgarh 11. Nagaur	1. Bikaner 2. Barmer 3. Churu 4. Hanumangarh 5. Jodhpur 6. Jaisalmer 7. Jalore 8. Pali 9. Sirohi 10. Ganganagar	<b>33 Districts</b>
2.	Area	72474 Sq. KM	87256 Sq. KM	182509 Sq. KM.	<b>342239 Sq. KM.</b>
3.	Population	256 Lakh	229 Lakh	203 Lakh	<b>688 Lakh*</b>
4.	Consumers	49.10 Lakh	46.51 Lakh	39.46 Lakh	<b>135.07 Lakh</b>
5	Total Villages	15145	15379	14148	<b>44672</b>
6	Populated Villages	14458	15068	13738	<b>43264</b>
7	Electrified Populated Village, (upto dt.31.12.16)	14414	15049	13700	<b>43163</b>

\* As per 2011 census.

### 2. Measures by the Distribution Companies to curb theft of electricity:-

To curb theft of electricity in the State, the posts of the rank of Addl. S.P. are sanctioned in the three Discoms and 46 nos. of Anti Power Theft Police Stations are operating in 33 districts of the State. The revenue collected by Vigilance and Operation & Maintenance Wings during the year 2016-17 (upto December, 2016) is as follows:-

Name of Distribution Company	Number of Cases Checked	No. of Cases where theft of electricity was booked.	Revenue Assessment (in Lacs)	Revenue recovery (in Lacs)	No. of Cases in which FIR was lodged
Jaipur VVNL	114567	85865	13421.44	5207.64	9518
Ajmer VVNL	121755	57849	11571.75	5817.44	4226
Jodhpur VVNL	73061	23887	6359.96	2570.67	4313
<b>Total</b>	<b>309383</b>	<b>167601</b>	<b>31353.15</b>	<b>13595.75</b>	<b>18057</b>

### 3. Energy Assessment on 11 KV Feeders:-

With the view to reduce the losses in sub-transmission and distribution network and to identify areas and feeders with higher energy losses, the meters have been installed on all 11 KV feeders. The work of energy auditing on 11 KV feeder is under progress.

### 4. Category-wise number of consumers of the three Distribution Companies of the State.

The category-wise details of number of consumers of each Distribution Company of the State are indicated here below:

#### Number of Consumers-Category wise(upto 31 Dec. 2016)\*

S No.	Name of the Nigam	Domestic	Non-Domestic	Public street light	Agriculture	Industry			PHED			Mix load	Railway Traction	Total
						Small	Medium	Large	Small	Medium	Large			
1	JVVNL	3748210	510890	5194	511451	80453	17431	4093	20054	430	143	11516	30	4909895
2	AVVNL	3643720	398837	5742	469158	76796	13332	4162	21231	528	124	17497	0	4651127
3	JDVVNL	3126329	368082	5199	344582	55703	13327	2081	15901	1485	197	13527	0	3946413
<b>Total</b>		10518259	1277809	16135	1325191	212952	44090	10336	57186	2443	464	42540	30	13507435

\* including PDC

## Chapter –III : Transmission System

### RVPN System at a glance

#### **Peak Demand in MW**

FY 2012-13	FY 2013-14	FY 2014-15	FY 2015-16	2016-17
8515.00	10038.00	10642.00	10961.00	10348

S. No.	Particulars	As on 31-03-2017 (Prov.)
1	No. of EHV GSS	
1.1	765 kV	2
1.2	400 kV	11
1.3	220 kV	118
1.4	132 kV	413
	Total	544
2	765 kV Lines (Ckt.Kms.)	425.5
3	400 kV Lines (Ckt.Kms.)	3937.33
4	220 kV Lines (Ckt.Kms.)	14387.88
5	132 kV Lines (Ckt.Kms.)	16690.487
6	No. of 765 kV Transformers	15
7	No. of 400 kV Transformers	25
8	No. of 220 kV Transformers	247
9	No. of 132 kV Transformers	1130
10	Transformer Capacity MVA (765 kV)	7500
11	Transformer Capacity MVA (400 kV)	7865
12	Transformer Capacity MVA (220 kV)	27705
13	Transformer Capacity MVA (132 kV)	29483

## Chapter –IV: Power Generation

### 1. Rajasthan Rajya Vidyut Utpadan Nigam Limited (RVUN) :-

Presently, total power availability / installed capacity in the State is 17281 MW as on Dec. 2016, including 5957.35 MW installed capacity of RVUN power stations as on 31.12.2016.

Rajasthan Rajya Vidyut Utpadan Nigam Limited owns and operates the following Thermal/Gas/Hydel Power Stations in the State Sector (capacity includes units commissioned till date):-

S. No.	Name of Power Station	Installed Capacity
1.	Suratgarh Super Thermal Power Station	1500 MW
2.	Kota Super Thermal Power Station	1240 MW
3.	Chhabra Thermal Power Project	1000 MW
4.	Kalisindh Thermal Power Station	1200 MW
5.	Dholpur Gas Based Combined Cycle Power Station	330 MW
6.	Ramgarh Gas Thermal Power Station	273.50 MW
7.	Giral Lignite Thermal Power Station	250 MW
8.	Mahi Hydel Power Station	140 MW
9.	Mini –Micro Hydel Power Station (10 Schemes)	23.85 MW
<b>TOTAL:</b>		<b>5957.35 MW</b>

In addition, Rajasthan Rajya Vidyut Utpadan Nigam is also managing and operating following two Inter State Hydel Power Stations:-

S. No.	Name of Power Station	Installed Capacity
1.	Rana Pratap Sagar Hydel Power Station	172.00 MW
2.	Jawahar Sagar Hydel Power Station	99.00 MW
<b>Total:</b>		<b>271.00 MW</b>

M/s Raj West Power Ltd. is operating lignite based thermal generating station at Bhadresher, District Barmer( Raj). Total installed capacity of this generating station is 1080 MW.

M/s Adani Power Rajasthan Ltd. is operating coal based thermal power generating station with an installed capacity of 1320 MW (2x660MW) based on super critical technology at Kawai, Distt. Baran, Rajasthan.

## Chapter-V: ARR/Tariff orders issued by the Commission

### 1. In the matter of approval of Investment Plan of Rajasthan Rajya Vidyut Prasaran Nigam Limited for FY 2016-17

Rajasthan Rajya Vidyut Prasaran Nigam Ltd. (RVPN) has filed the Petition No. RERC/590/16 dated 11.01.2016 under Regulation no. 4 of RERC (Investment Approval) Regulations, 2006 for approval of Investment Plan for FY 2016-17.

The abridged petition in the news papers were published by the petitioner on 30.06.2016 & 01.07.2016. The Commission after considering the submissions of the petitioner and suggestions of the stake holders, passed the order on 27<sup>th</sup> October, 2016 as under:-

The summary of the Investment Plan for 2016-17 approved by the Commission is as under:

### Investment Plan FY 2016-17 (Rs. Crore)

S. No.	Particulars	Proposed	Approved
1	Transmission Works including SLDC function	2380	2138

### 2. In the matter of approval of ARR and determination of tariff for FY 2016-17 for recovery of Transmission and SLDC Charges and True up of ARR for FY 2014-15 of Rajasthan Rajya Vidyut Prasaran Nigam Limited.

RVPN has filed Petition No. RERC/592/16 for approval of ARR for FY 2016-17 and recovery of Transmission and SLDC Charges and True-up for FY 2014-15 on 27.01.2016.

The abridged petition in the news papers were published by the petitioner on 30.06.2016 & 01.07.2016. The Commission after considering the submissions of the petitioner and suggestions of the stake holders, passed the order on 27<sup>th</sup> October, 2016 as under:-

The summary of the True Up of ARR of FY 2014-15, ARR for Transmission and SLDC function for FY 2016-17 approved by the Commission is as under:

#### A True Up Petition for FY 2014-15 (Rs. Crore)

Particulars	Approved in Tariff Order	As per Petition	Allowed after truing Up
<b>Transmission Function</b>			
Total Expenditure	2,165.66	2,472.22	2,183.82
Total Revenue	2,165.66	2,115.09	2,363.62
Total Revenue- Total Expenditure	0.00	(357.14)	179.80
<b>SLDC function</b>			
Total Expenditure	30.74	19.69	19.74
Total Revenue		19.74	47.77
Total Revenue-Total Expenditure		0.05	28.03

#### B ARR for FY 2016-17

Particulars	Petitioners submission	Approved
<b>Transmission Function</b>		
Total Revenue Expenditure	2,990.94	2,649.59
Truing-up FY 2014-15 Surplus/(Gap)	(357.14)	179.80
Net Revenue Requirement	3,348.08	2,469.79
<b>SLDC function</b>		
Total Revenue Expenditure	43.24	39.27
Truing-up FY 2014-15 Surplus/(Gap)	0.05	28.03
Net Revenue Requirement	41.35	9.40

**C Approved Transmission Tariff for FY 2016-17 (Rs. Crore)**

S. No.	Particulars	Unit	Approved by Commission
1	Net Transmission charges to be recovered from Discoms and Long Term Open Access customers	Rs. Crore	2,469.79
2	Less: Revenue from Inter State transmission Lines	Rs. Crore	37.98
3	Net Revenue Requirement From Transmission Tariff	Rs. Crore	2,431.81
4	Approved Transmission capacity for Discoms	MW	12,528
5	Long Term Open Access customers	MW	600
6	Total Transmission Capacity	MW	13,128
7	Transmission Tariff for Discoms and Long Term Open Access customers	Rs./kW/Month	154.37
8	Transmission Tariff for Medium Term Open Access customers	Rs./kW/Month	154.37
9	Transmission Tariff for intra-state Short Term Open Access customers	Rs./kW/Day	5.08
10	Energy Requirement for Discoms in FY 2016-17	MU	78,513
11	Energy Requirement for Long Term Open Access customers in FY 2016-17	MU	3,760
12	Transmission tariff for use of State transmission system in intra-State Short Term Open Access bilateral transactions and collective power exchange transactions	paise/ kWh	29.56
13	Transmission Charges to be recovered from Discoms during FY 2016-17	Rs. Crore	2,320.67

**Note:** The State Government vide letter No. F.20 (6) Energy /2010 /Pt.2 dated 13.1.2015 has issued a policy directive to fix the transmission tariff of STU for Solar Power Projects to be commissioned during the period 01.04.2015 to 31.03.2018 or for a capacity of 2000 MW, whichever is earlier, at a rate equal to 50% of normal transmission tariff (Rs. Per MW) as applicable to conventional power for a period of 25 years, for which no subsidy shall be provided by the State Government. The Commission under Section 108 of Electricity Act, 2003 shall be guided by the policy directives issued by the State Government. Therefore, the Commission directs RVPN to charge the transmission tariff @ equal to 50% of the rate specified at Sr. No. 7, 8 & 9 above as the case may be for such solar power projects which are covered under the above policy directive.

**D Approved SLDC expenses for FY 2016-17 (Rs. Crore)**

S. No.	Particulars	Approved by Commission
1	Net Revenue Requirement for SLDC Operations to be recovered from Discoms and Long Term Open Access Customers (Rs. Crore)	9.40
2	Contracted capacity for Discoms and Long Term Open Access Customers (MW)	13,128
3	SLDC Charges for Discoms and Long Term OA Transactions (Paise/kW/Month)	59.66
4	SLDC Charges for Medium Term OA Transactions (Paise/kW/Month)	59.66
5	SLDC Charges for Short Term OA Transactions (Paise/kW/Day)	1.96

**3. Determination of Annual Revenue Requirement (ARR) & Retail Supply Tariff of Discoms for FY 2015-16 and approval of true-up of ARR for FY 2013-14 & Investment Plan for FY 2015-16 (Petition no. 552/15, 553/15, 554/15)**

(i) The public hearing was held in the matter on 25.04.2016, 26.04.2016 & 27.04.2016 at Jaipur. After considering the views of stakeholders, the Commission issued its order in the matter of revision of retail tariff, and determination of ARR of Discoms for FY 2015-16, true-up of ARR for FY 2013-14 & investment plan for FY 2015-16 on 22.09.2016.

(ii) The Discoms in their petitions for determination of ARR and tariff for FY 2015-16, projected an ARR of Rs. 42668 Crore and net deficit of Rs. 10021 Crores after receipt of Govt. subsidy at existing tariff. They proposed tariff increase of Rs. 2993 Crores to meet their deficit. After disallowing excess losses and considering other costs on normative basis, the Commission determined the net ARR as Rs. 33800 Crores with a net deficit of Rs. 3383 Crores for the financial year 2015-16 at existing tariff. However, as the year 2015-16 was already over, the Commission had not allowed recovery of charges with effect from back date and ordered that the gap for FY 2015-16 and for further first five months of FY 2016-17 shall be treated as regulatory asset to be passed on during consideration of future petitions. The tariff order come into force from 1<sup>st</sup> September 2016 and shall remain in force till next tariff order of the Commission.

(iii) The tariff, determined by the Commission, for various categories is as under:-

**Existing and Approved Tariff for FY 2015-16**

**DOMESTIC CATEGORY (LT-1 and HT-1)**

**(BPL, Astha Card Holders and Small Domestic having consumption upto 50 units per month)**

**BPL and Small Domestic**

Domestic Category			Domestic Category		
Particulars	Existing Tariff		Particulars	Approved Tariff	
	Energy Charges	Fixed Charges		Energy Charges	Fixed Charges
BPL and Astha card Holders*					
For consumption upto first 50 units per month	Rs. 3.25/ unit	Rs. 90/ connection / month	(i) For consumption upto first 50 units per month	Rs. 3.50/ unit	Rs. 100/ connection / month
Small Domestic*					
For consumption upto 50 units per month	Rs. 3.50/ unit	Rs. 90/ connection / month	(i) For consumption upto 50 units per month	Rs. 3.85/ unit	Rs. 100/ connection / month

\*Note: The BPL and Astha card Holder domestic tariff shall be exclusively applicable to individual consumer person and shall not be applicable to any institution. In case any BPL, Astha Card Holder and Small Domestic consumers has consumed more than 50 unit per month in any billing cycle, the consumer will be charged as per the applicable tariff of the respective slab under the LT-I domestic category for the additional units consumed.

**General Domestic-1**

Domestic Category			Domestic Category		
Particulars	Existing Tariff		Particulars	Approved Tariff	
	Energy Charges	Fixed Charges		Energy Charges	Fixed Charges
<b>General Domestic-1 (Consumption upto 150 units/month)</b>			<b>General Domestic-1 (Consumption upto 150 units/month)</b>		
(i) For consumption upto first 50 units per month	Rs. 3.50/ unit	Rs. 180/ connection / month	(i) For consumption upto first 50 units per month	Rs. 3.85/ unit	Rs. 200/ connection / month
(ii) For consumption above 50 units and upto 150 units per month	Rs. 5.45/ unit		(ii) For consumption above 50 units and upto 150 units per month	Rs. 6.10/ unit	



### General Domestic-2

Domestic Category			Domestic Category		
Particulars	Existing Tariff		Particulars	Approved Tariff	
<b>General Domestic-2 Consumption above 150 units and upto 300 units/month )</b>			<b>General Domestic-2 ( Consumption above 150 units and upto 300 units/month )</b>		
	<b>Energy Charges</b>	<b>Fixed Charges</b>		<b>Energy Charges</b>	<b>Fixed Charges</b>
(i) For consumption upto first 50 units per month	Rs. 3.50/ unit	Rs.200/ connection / month	(i) For consumption upto first 50 units per month	Rs. 3.85/ unit	Rs. 220/ connection / month
(ii) For consumption above 50 units and upto 150 units per month	Rs. 5.45/ unit		(ii) For consumption above 50 units and upto 150 units per month	Rs. 6.10/ unit	
(iii) For consumption above 150 units and upto 300 units per month	Rs. 5.70/ unit		(iii) For consumption above 150 units and upto 300 units per month	Rs. 6.40/ unit	

### General Domestic-3

Domestic Category			Domestic Category		
Particulars	Existing Tariff		Particulars	Approved Tariff	
<b>General Domestic-3 (Consumption above 300 and upto 500 units/month)</b>			<b>General Domestic-3 (Consumption above 300 and upto 500 units/month)</b>		
	<b>Energy Charges</b>	<b>Fixed Charges</b>		<b>Energy Charges</b>	<b>Fixed Charges</b>
(i) For consumption upto first 50 units per month	Rs. 3.50/ unit	Rs.240/ connection / month	(i) For consumption upto first 50 units per month	Rs. 3.85/ unit	Rs. 265/ connection / month
(ii) For consumption above 50 units and upto 150 units per month	Rs. 5.45/ unit		(ii) For consumption above 50 units and upto 150 units per month	Rs. 6.10/ unit	
(iii) For consumption above 150 units and upto 300 units per month	Rs. 5.70/ unit		(iii) For consumption above 150 units and upto 300 units per month	Rs. 6.40/ unit	
(iv) For consumption above 300 units and upto 500 units per month	Rs. 6.00/ unit		(iv) For consumption above 300 units and upto 500 units per month	Rs. 6.70/ unit	

### General Domestic-4

Domestic Category			Domestic Category		
Particulars	Existing Tariff		Particulars	Approved Tariff	
<b>General Domestic-4 (Consumption above 500 units/month)</b>			<b>General Domestic-4 (Consumption above 500 units/month)</b>		
	<b>Energy Charges</b>	<b>Fixed Charges</b>		<b>Energy Charges</b>	<b>Fixed Charges</b>
(i) For consumption upto first 50 units per month	Rs. 3.50/ unit	Rs. 260/ connection / month	(i) For consumption upto first 50 units per month	Rs. 3.85/ unit	Rs. 285/ connection / month
(ii) For consumption above 50 units and upto 150 units per month	Rs. 5.45/ unit		(ii) For consumption above 50 units and upto 150 units per month	Rs. 6.10/ unit	
(iii) For consumption above 150 units and upto 300 units per month	Rs. 5.70/ unit		(iii) For consumption above 150 units and upto 300 units per month	Rs. 6.40/ unit	
(iv) For consumption above 300 units and upto 500 units	Rs.6.00/ unit		(iv) For consumption above 300 units and upto 500 units per month	Rs. 6.70/ unit	

Domestic Category			Domestic Category		
Particulars	Existing Tariff		Particulars	Approved Tariff	
General Domestic-4 (Consumption above 500 units/month)			General Domestic-4 (Consumption above 500 units/month)		
	Energy Charges	Fixed Charges		Energy Charges	Fixed Charges
per month					
(v)For consumption above 500 units per month	Rs. 6.40/ unit		(v)For consumption above 500 units per month	Rs. 7.15/ unit	

#### Domestic Category (HT-1)

Domestic Category			Domestic Category		
Particulars	Existing Tariff		Particulars	Approved Tariff	
HT – Domestic (HT-1)			HT – Domestic (HT-1)		
	Energy Charges	Fixed Charges		Energy Charges	Fixed Charges
For contract demand over 50 kVA	Rs. 5.50/ unit	Rs. 170 per kVA of Billing Demand per month	For contract demand over 50 kVA	Rs. 6.15/ unit	Rs. 190 per kVA of Billing Demand per month

#### NON-DOMESTIC CATEGORY (LT-2 & HT-2)

##### NDS up to 5 kW of SCL

##### (NDS- type1)

Non-Domestic Category			Non-Domestic Category		
Particulars	Existing Tariff		Particulars	Approved Tariff	
LT-NDS(LT-2)			LT-NDS(LT-2)		
Type1 (Consumption upto 100 units/month)			Type1 (Consumption upto 100 units/month)		
	Energy Charges	Fixed Charges		Energy Charges	Fixed Charges
Consumption upto first 100 units per month	Rs. 6.75 /unit	Rs. 210 / connection / month	Consumption upto first 100 units per month	Rs. 7.55 /unit	Rs. 230 / connection / month

##### (NDS- type2)

Non-Domestic Category			Non-Domestic Category		
Particulars	Existing Tariff		Particulars	Approved Tariff	
LT-NDS(LT-2)			LT-NDS(LT-2)		
Type 2 (Consumption above 100 units/month and upto 200 units/month)			Type 2 (Consumption above 100 units/month and upto 200 units/month)		
	Energy Charges	Fixed Charges		Energy Charges	Fixed Charges
Consumption upto first 100 units per month	Rs.6.75/unit	Rs. 210/ connection / month	Consumption upto first 100 units per month	Rs. 7.55 /unit	Rs. 230 / connection / month
Consumption above 100 units and upto 200 unit per month	Rs.7.15/unit		Consumption above 100 units and upto 200 unit per month	Rs. 8.00 /unit	

**(NDS- type 3)**

Non-Domestic Category			Non-Domestic Category		
Particulars	Existing Tariff		Particulars	Approved Tariff	
LT-NDS(LT-2)			LT-NDS(LT-2)		
<b>Type 3 (Consumption above 200 units and upto 500 units/month)</b>			<b>Type 3 (Consumption above 200 units and upto 500 units/month)</b>		
	Energy Charges	Fixed Charges		Energy Charges	Fixed Charges
Consumption upto first 100 units per month	Rs.6.75 /unit	Rs. 250/ connection / month	Consumption upto first 100 units per month	Rs. 7.55 /unit	Rs. 275 / connection / month
Consumption above 100 units and upto 200 unit per month	Rs.7.15 /unit		Consumption above 100 units and upto 200 unit per month	Rs. 8.00 /unit	
Consumption above 200 unit and upto 500 units per month	Rs.7.45/unit		Consumption above 200 unit and upto 500 unit per month	Rs. 8.35 /unit	

**(NDS- type 4)**

Non-Domestic Category			Non-Domestic Category		
Particulars	Existing Tariff		Particulars	Approved Tariff	
LT-NDS(LT-2)			LT-NDS(LT-2)		
<b>Type 4 (Consumption above 500 units/month)</b>			<b>Type 4 (Consumption above 500 units/month)</b>		
	Energy Charges	Fixed Charges		Energy Charges	Fixed Charges
Consumption upto first 100 units per month	Rs.6.75/unit	Rs. 300/ connection / month	Consumption upto first 100 units per month	Rs. 7.55 /unit	Rs. 330 / connection / month
Consumption above 100 units and upto 200 unit per month	Rs.7.15/unit		Consumption above 100 units and upto 200 unit per month	Rs. 8.00 /unit	
Consumption above 200 units and upto 500 units per month	Rs.7.45/unit		Consumption above 200 units and upto 500 units per month	Rs. 8.35 /unit	
Consumption above 500 unit per month	Rs.7.85/unit		Consumption above 500 unit per month	Rs. 8.80 /unit	

### NDS above 5 kW of SCL

Non-Domestic Category			Non-Domestic Category		
Particulars	Existing Tariff		Particulars	Approved Tariff	
NDS above 5 KW of SCL (LT-2)			NDS above 5 KW of SCL (LT-2)		
	Energy Charges	Fixed Charges		Energy Charges	Fixed Charges
Consumption upto first 100 units per month	Rs.6.75/unit	Rs.85/ KW of SCL / month	Consumption upto first 100 units per month	Rs. 7.55 /unit	Rs.95/ KW of SCL / month
Consumption above 100 units and upto 200 unit per month	Rs.7.15/unit		Consumption above 100 units and upto 200 units per month	Rs. 8.00 /unit	
Consumption above 200 unit and upto 500 units per month	Rs.7.45/unit		Consumption above 200 units and upto 500 units per month	Rs. 8.35 /unit	
Consumption above 500 units per month	Rs. 7.85/unit	Rs. 95/ KW of SCL / month Or Rs. 170 per kVA of Billing Demand per month (If SCL is more than 18.65 KW)	Consumption above 500 units per month	Rs. 8.80 /unit	Rs. 105/ KW of SCL / month Or Rs. 190 per kVA of Billing Demand per month (If SCL is more than 18.65 KW)

### NDS –Contract Demand Over 50 kVA

HT-NDS (HT-2)			HT-NDS (HT-2)		
For contract demand over 50 kVA			For contract demand over 50 kVA		
All units	Rs.7.45/unit	Rs.170/ kVA of Billing Demand per month	All units	Rs. 8.35 /unit	Rs.190/ kVA of Billing Demand per month

### PUBLIC STREET LIGHTING (LT-3)

Particulars	Existing Tariff		Approved Tariff	
Public Street Lighting	Energy Charges	Fixed Charges	Energy Charges	Fixed Charges
Population <1 Lakh	Rs. 5.85/ unit	Rs. 75/ Lamp point/ month subject to a maximum of Rs. 750 /service connection/month	Rs. 6.55/ unit	Rs. 85/ Lamp point/ month subject to a maximum of Rs. 850 /service connection/month
Population = >1 Lakh	Rs. 6.30/ unit	Rs. 95/ Lamp point/ month subject to a maximum of Rs. 1900 /service connection/month	Rs. 7.05/ unit	Rs. 105/ Lamp point/ month subject to a maximum of Rs. 2100 /service connection/month

**AGRICULTURE (Metered and Flat Rate) (LT-4)**

Particulars		Existing Tariff			Particulars		Approved Tariff	
Metered (AG/MS/LT-4)					Metered (AG/MS/LT-4)			
Agriculture Supply	EC	Subsidy indicated to be received from Govt.	Effective EC after subsidy	Fixed Charges	Agriculture Supply	EC	Fixed Charges	
(i) General (getting supply in block hours)	Rs. 4.50 /unit	Rs. 3.60/unit	Rs. 0.90 /unit	Rs. 15/HP/month of Sanctioned Connected Load	(i) General (getting supply in block hours)	Rs. 4.75 /unit	Rs.15 per HP per Month of SCL	
(ii) All others not covered under items (i) and getting supply more than block hours	Rs. 5.70 /unit	Rs 3.60 /unit	Rs. 2.10 /unit	Rs. 30/HP/month of Sanctioned Connected Load	(ii) All others not covered under items (i) and getting supply more than block hours	Rs. 6.05 /unit	Rs.30 per HP per Month of SCL	
Flat/ unmetered (AG/FR/LT-4)					Flat/ unmetered (AG/FR/LT-4)			
(i) General (getting supply in block hours)	Rs. 600 / HP/ Month	Rs. 515 / HP/ Month	Rs. 85 / HP/ Month	Rs.15/HP/month of Sanctioned Connected Load	(i) General (getting supply in block hours)	Rs. 635 HP /Month	Rs.15 per HP per Month of SCL	
(ii) All others not covered under items (i) above and getting more than block hour supply	Rs. 720/ HP/ Month	Rs. 490/ HP/ Month	Rs. 230/ HP/ Month	Rs. 30/HP/month of Sanctioned Connected Load	(ii) All others not covered under items (i) above and getting more than block hour supply	Rs. 765 HP /Month	Rs.30 per HP per Month of SCL	

**SMALL INDUSTRIES (LT-5)**

Particulars	Existing Tariff		Approved Tariff	
Small Industrial Service (LT-5) (Load not exceeding 18.65 kW (25HP))	Energy Charges	Fixed Charges	Energy Charges	Fixed Charges
Upto first 500 units	Rs.5.35/ unit	Rs. 60/ HP/ month of sanctioned connected load	Rs.6.00/ unit	Rs. 65/ HP/ month of sanctioned connected load
Above 500 units	Rs.5.75/ unit	Rs. 60/ HP/ month of sanctioned connected load	Rs.6.45/ unit	Rs. 65/ HP/ month of sanctioned connected load

**MEDIUM INDUSTRIES (LT-6 and HT-3)**

Particulars	Existing Tariff		Approved Tariff	
	Energy Charges	Fixed Charges	Energy Charges	Fixed Charges
Medium Industrial Service (LT-6)	Rs. 6.25/ unit	Rs. 70 per HP per month of sanctioned connected load or Rs. 150 per kVA of Billing Demand per month	Rs. 7.00/ unit	Rs. 75 per HP per month of sanctioned connected load or Rs. 165 per kVA of Billing Demand per month
Medium Industrial Service (HT-3)	Rs. 6.25/ unit	Rs. 150/ kVA of Billing Demand per month	Rs. 7.00/ unit	Rs. 165/ kVA of Billing Demand per month

**BULK SUPPLY FOR MIXED LOAD (LT-7 and HT-4)**

Particulars	Existing Tariff		Approved Tariff	
	Energy Charges	Fixed Charges	Energy Charges	Fixed Charges
Schedule ML/LT-7	Rs. 6.25/ unit	Rs. 70 per HP per month of sanctioned connected load or Rs. 150 per kVA of Billing Demand per month	Rs. 7.00/ unit	Rs. 75 per HP per month of sanctioned connected load or Rs. 165 per kVA of Billing Demand per month
Schedule ML/HT-4	Rs.6.25/ unit	Rs. 150/kVA of Billing Demand per month	Rs. 7.00/ unit	Rs. 165/kVA of Billing Demand per month

**LARGE INDUSTRIES (HT-5)**

Particulars	Existing Tariff		Approved Tariff	
	Energy Charges	Fixed Charges	Energy Charges	Fixed Charges
SCL above 150 HP &/or having Contract/Maximum Demand above 125 kVA (HT-5)	Rs.6.50/ unit	Rs. 170/ kVA of Billing Demand per month	Rs. 7.30/ unit	Rs. 185/ kVA of Billing Demand per month

**4. Determination of Additional Surcharge for FY 2014-15 (Petition no. 548/15).**

(i) Discoms collectively had filed the petition for determination of Additional Surcharge under Section 42 (4) and 39 (2)(d) of the Electricity Act, 2003 (in short the Act) read with regulation 4(2) and 16 of RERC (Terms and Conditions for Open Access) Regulations, in which Additional Surcharge of Rs. 1.39/unit was proposed. Subsequently it was revised to Rs. 1.43/unit.

(ii) The public hearing was held in the matter on 15.07.2015, 13.08.2015, 03.09.2015, 08.10.2015, 29.10.2015, 03.03.2016, 01.04.2016, 21.04.2016, 05.07.2016 & 27.07.2016. After considering the views of the stakeholders, the Commission vide its order dt. 24.08.2016 determined the Additional Surcharge as Rs. 0.80/unit with effect from 1st May, 2016 as observed in the Hon'ble High Court's order dated 01.06.2016 in SB Civil Writ Petitions Nos. 7304 & 7326/2016 and other connected petitions.

**5. Determination of pooled cost of power purchase for FY 14-15 and FY 15-16 of Jodhpur Discom (Petition no. 625/16 and 626/16).**

(i) Jodhpur Vidyut Vitran Nigam Ltd.(JdVVNL) filed the petitions for determination of pooled cost of power purchase for FY 2014-15 and for 2015-16 on 11.03.2016, under Regulation 10 (2) (a) of RERC (Renewable Energy Certificate and Renewable Purchase Obligation Compliance Framework) Regulations, 2010.

(ii) The matter was heard on 31.03.16. Considering the data of the Discom and audited accounts placed, Commission vide its order dated 01.04.2016 determined the pooled cost of power purchase for 2014-15 and 2015-16 as Rs. 3.5360 and Rs. 3.4012 per unit respectively.

(iii) The pooled cost of power purchase for FY 2015-16 as allowed by the Commission shall be the provisional pooled cost of power purchase for FY 2016-17 till the same is determined by the Commission.

#### **6. Determination of Cross Subsidy Surcharge (CSS) of Discoms (Petition no. 817/2016)**

(i) Discoms collectively had filed petition on 22.07.2016 for determination of Cross Subsidy Surcharge ('CSS') payable by open access consumers under Section 42(2) read with Section 39 and 40 and other applicable provision of the Electricity Act, 2003 enabling Regulations.

(ii) The matter was heard on 22.11.2016. After considering the views of stakeholders, the Commission vide its order dated 01.12.2016 determined the Cross Subsidy Surcharge as under:-

<b>Category of Open Access consumer</b>	<b>Voltage Level</b>	<b>Cross Subsidy Surcharge (Rs./unit)</b>
Non Domestic Service	11kv	1.88
	33kv	2.41
	132kv and above	2.63
Mixed Load/ Bulk Supply	11kv	0.53
	33kv	1.10
	132kv and above	1.34
Large Industrial Service	11kv	0.83
	33kv	1.39
	132kv and above	1.63

#### **7. Truing up of ARR of Discoms for FY 14-15 and FY 15-16 (Petition no. 986/16, 987/16, 990/16, 991/16, 999/16, 1000/16)**

(i) The three distribution companies namely, Jodhpur Vidyut Vitran Nigam Ltd.(JdVVNL), Ajmer Vidyut Vitran Nigam Ltd.(AVVNL) and Jaipur Vidyut Vitran Nigam Ltd.(JVNL) had filed Petitions on 09.12.2016, 13.12.2016 & 16.12.2016 respectively for true up of ARR for FY 14-15 and FY15-16 under RERC (Terms & Conditions for Determination of Tariff) Regulations, 2014.

(ii) After scrutiny of petitions, data gaps were sent to Discoms on 16.01.2017. The abridged form of the petitions were published in the newspaper by the Petitioners in the first week of February 2017 for inviting comments/suggestions from the persons, desirous of submitting the same. The petitions were also placed on the website of the Commission and of the Discoms.

(iii) As on 31st March 2017, the reply from Discoms was awaited and matter was under consideration of the Commission.

#### **8. Approval of Investment plan of Discoms for FY 16-17 and FY 17-18(Petition no. 988/16, 989/16, 992/16, 993/16, 1001/16, 1002/16)**

(i) The three distribution companies namely, Jodhpur Vidyut Vitran Nigam Ltd.(JdVVNL), Ajmer Vidyut Vitran Nigam Ltd.(AVVNL) and Jaipur Vidyut Vitran Nigam Ltd.(JVNL) had filed Petitions on 09.12.2016, 13.12.2016, & 16.12.2016 respectively for approval of investment plan for FY 16-17 and FY 17-18 under RERC (Investment Approval) Regulations, 2006.

(ii) After scrutiny of petitions, data gaps were sent to Jaipur Discom on 28.12.2016 and to Ajmer Discom & Jodhpur Discom on 29.12.2016. The abridged form of the petitions were published in the newspaper by the Petitioners in the last week of January 2017 for inviting comments/suggestions from the persons, desirous of submitting the same. The petitions were also placed on the website of the Commission and of the Discoms.

(iii) As on 31st March 2017, the reply from Discoms was awaited and matter was under consideration of the Commission.

**9. Determination of Annual Revenue Requirement (ARR) of Discoms for FY 2016-17 and FY 2017-18 (Petition no. 1076/17, 1077/17, 1078/17)**

(i) The three distribution companies namely, Jodhpur Vidyut Vitran Nigam Ltd.(JdVVNL), Ajmer Vidyut Vitran Nigam Ltd.(AVVNL) and Jaipur Vidyut Vitran Nigam Ltd.(JVVNL) had filed Petitions on 30.01.2017, 31.01.2017, & 31.01.2017 respectively for determination of Annual Revenue Requirement (ARR) and retail supply tariff for FY 16-17 and FY 17-18 (no tariff hike is proposed for FY 2016-17 and FY 2017-18) under section 62 and section 64 of Electricity Act, 2003 read with RERC (Terms & Conditions for Determination of Tariff) Regulations, 2014.

(ii) After scrutiny of petitions, data gaps were sent to Discoms on 08.03.2017. As on 31st March 2017, the reply from Discoms was awaited and matter was under consideration of the Commission.

**10. Determination of pooled cost of power purchase for FY 16-17 of Ajmer Discom (Petition no. 1082/17).**

(i) Ajmer Vidyut Vitran Nigam Ltd.(AVVNL) filed a petition on 06.02.2017 for determination of pooled cost of power purchase for FY 2016-17 under Regulation 10 (2) (a) of RERC (Renewable Energy Certificate and Renewable Purchase Obligation Compliance Framework) Regulations, 2010.

(ii) The notice was published in the news papers on 10.03.2017 & 11.3.2017 for inviting comments/suggestions of general public. As on 31st March 2017, matter was under consideration of the Commission.

**11. Determination of pooled cost of power purchase for FY 16-17 of Jodhpur Discom (Petition no. 1060/17).**

(i) Jodhpur Vidyut Vitran Nigam Ltd.(JdVVNL) filed a petition on 27.01.2017 for determination of pooled cost of power purchase for FY 2016-17 under Regulation 10 (2) (a) of RERC (Renewable Energy Certificate and Renewable Purchase Obligation Compliance Framework) Regulations, 2010.

(ii) The notice was published in the news papers on 06.03.2017 for inviting comments/suggestions of general public. As on 31st March 2017, matter was under consideration of the Commission.

**12. Determination of pooled cost of power purchase for FY 16-17 of Jaipur Discom (Petition no. 1106/17).**

(i) Jaipur Vidyut Vitran Nigam Ltd.(JVVNL) filed a petition on 15.03.2017 for determination of pooled cost of power purchase for FY 2016-17 under Regulation 10 (2) (a) of RERC (Renewable Energy Certificate and Renewable Purchase Obligation Compliance Framework) Regulations, 2010.

(ii) As on 31st March 2017, matter was under consideration of the Commission.

**13. Review of Commission's order dated 07.09.2015 issued in the matter of determination of Annual Revenue Requirement & Tariff for FY 2015-16 for KTPS (Unit- 1 to 7), STPS (Unit- 1 to 6), CTPP (Unit -1 to 3), RGTPP, DCCPP, RGTPP (110.5 MW & 160 MW Stage III), GLTPS Unit-2 and Mahi hydel power station of RVUN (Petition No. 701/16)**

RVUN filed above review petition on 30.03.2016 along with the application for condonation of delay wherein RVUN has prayed to allow Return of Equity @ 15.5% against the 5% as earlier prayed by the Petitioner. Commission vide its order dated 08.08.2016 holding that no ground has been made out for amendment/review of the order by the Petitioner under Section 94 (1) (f), dismissed the review petition.



**14. Annual Performance Review (APR) for FY 2013-14 for KTPS (Units- 1 to 7), STPS (Units-1 to 6), CTPP (Units- 1 to 2), DCCPP, RGTPP (Stage-I & II), Mahi Hydel and approval of Aggregate Revenue Requirement & determination of tariff for FY 2016-17 for KTPS (Units-1 to 7), STPS (Units- 1 to 6), CTPP (Units-1 to 4), DCCPP, RGTPP (Stage-I, II & III), KaTPP (Units-1 to 2) and Mahi Hydel Power Stations of Rajasthan Rajya Vidyut Utpadan Nigam Ltd (Petition No. 594/16).**

RVUN filed this petition on 12.04.2016. Commission, after truing up the ARR for FY 2013-14, vide its order dt. 17.10.2016 has approved revenue gap of Rs. 63.45 Crore as against the revenue gap of Rs. 332.06 Crore claimed by RVUN. Summary of True up of ARR for FY 2013-14 as under:

**Summary of True up for FY 2013-14 (Rs. Crore)**

Particulars	Petitioned	Approved after sharing of gains and losses
<b>Cost side true up</b>		
Fixed Cost less Non Tariff Income	1711.22	1831.44
Variable Cost	6661.61	6518.57
PLF incentive	11.12	11.12
Less: Reduction in AFC due to non achievement of Target Availability	0.00	-126.38
<b>ARR (A)</b>	<b>8383.94</b>	<b>8234.74</b>
<b>Revenue side true up</b>		
Revenue from sale of electricity	8040.76	8119.03
PLF incentive	11.12	11.12
Revenue pertaining to previous years	0.00	25.06
Sharing of Revenue loss due to higher auxiliary consumption	0.00	16.09
<b>Total Revenue (B)</b>	<b>8051.88</b>	<b>8171.30</b>
<b>Net Revenue Gap (C = A-B)</b>	<b>332.06</b>	<b>63.45</b>

Commission also approved the provisional tariff for RVUN power stations for FY 2016-17 as follows:

**Summary of tariff for old units for FY 2016-17**

S. No.	Particulars	KTPS (Unit 1-7)	STPS (Unit 1-6)	CTPP (Unit 1&2)	DCCPP	RGTPS (110.5 MW)
1	Fixed Charges (Rs. Crore)	479.66	839.60	491.85	212.81	42.37
2	Fixed Charges (Rs./kWh)	0.594	0.856	1.543	0.948	0.641
3	Variable Charges (Rs./kWh)	2.542	3.317	1.978	3.571	2.911
4	Total Tariff (Rs./kWh)	3.135	4.174	3.521	4.519	3.552

**Summary of tariff for new units for FY 2016-17**

S. No.	Particulars	CTPP (Unit-3)	CTPP (Unit-4)	RGTPS (160 MW)	KaTPP (Unit-1)	KaTPP (Unit-2)
1	Fixed Charges (Rs. Crore)	292.05	261.53	146.48	888.96	
2	Fixed Charges (Rs./kWh)	1.832	1.581	1.530	2.162	1.946
3	Variable Charges (Rs./kWh)	2.110	2.110	3.088	2.437	2.437
4	Total Tariff (Rs./kWh)	3.942	3.691	4.618	4.599	4.383

**15. Approval of Aggregate Revenue Requirement & Tariff for FY 2014-15, FY 2015-16 and FY 2016-17 for Giral Lignite Power Limited (GLPL) Unit- 1 & 2 (Petition No. 760/16).**

GLPL filed a petition on 24.06.2016 for approval of ARR and Tariff for its Unit- 1 & 2 (2x125 MW) for FY 2014-15, FY 2015-16 and FY 2016-17. Commission vide its order dated 12.08.2015 approved the provisional tariff for FY 2014-15 to FY 2016-17 for GLPL Unit- 1 & 2 as under:

**Tariff for FY 2014-15**

(Rs/kWh)

Particulars	Provisionally Approved	
	Unit-1	Unit-2
Fixed Charge	1.789	1.914
Variable Charge	1.132	1.237
Total Tariff	2.921	3.151

**Tariff for FY 2015-16**

Particulars	Provisionally Approved	
	Unit-1	Unit-2
Fixed Charge	2.016	2.160
Variable Charge	1.374	1.391
Total Tariff	3.390	3.551

**Tariff for FY 2016-17**

Particulars	Provisionally Approved	
	Unit-1	Unit-2
Fixed Charge	1.964	2.113
Variable Charge	1.452	1.452
Total Tariff	3.416	3.565

**16. Aggregate Revenue Requirement and Tariff for FY 2014-15, FY 2015-16 and FY 2016-17 for Raj West Power Limited (RWPL) 1080 MW Lignite based thermal generating station (Petition No. 816/16).**

RWPL filed a petition on 19.07.2016 for determination of ARR & Tariff for its 1080 MW Lignite based thermal generating station for FY 2014-15 to FY 2016-17. As per the requirement under Section 64(2) of the Electricity Act, 2003, public notice with salient features of the petition inviting objections/comments/suggestions from any desirous person was published in newspapers on 28.09.2016. Petitioner has replied the data gaps and objections/comments/suggestions submitted by stakeholders on 30.01.2017.

As on 31.03.2017, petition is pending under the consideration of the Commission.

- 17. Petition filed under Section 94 (1) (f) of the Act for review of Commission's order dated 17.10.2016 issued in the matter of approval of Aggregate Revenue Requirement (ARR) and determination of Tariff for KTPS (Unit- 1 to 7), STPS (Unit- 1 to 6), CTPP (Unit- 1 to 4), DCCPP, RGTPP (Stage- 1 to 3), KaTPP (Unit- 1 to 2), Mahi Hydel and Annual Performance Review (APR) for FY 2013-14 for KTPS, STPS, CTPP (Unit- 1 to 2), DCCPP, RGTPP & Mahi Hydel Power Stations of RVUN. (Petition No. 959/16).**

RVUN filed this review petition on 15.11.2016. The Commission's vide its order dated 09.12.2016 has dismissed the said review petition as it does not have merit acceptance.

- 18. Determination of ARR & tariff for FY 2017-18 for M/s Raj West Power Ltd. on Lignite from Kapurdi mine and determination of transfer price of Lignite from Kapurdi mine for FY 2017-18 for M/s Barmer Lignite Mining Company Ltd. (Petition No. 966/16 & 967/16).**

M/s RWPL filed a petition on 29.11.2016 for determination of tariff for FY 2017-18 for its power station on Lignite from Kapurdi mine. M/s BLMCL has also filed a petition before the Commission on 29.11.2016 for determination of transfer price of lignite from Kapurdi mine for FY 2017-18 to supply Lignite to power plant of RWPL. As on 31.03.2017, petitions are pending under the consideration of the Commission.

- 19. Determination of ARR and tariff for FY 2017-18 & Truing up for FY-2014-15 & 2015- 16 of for Rajasthan Rajya Vidyut Utpadan Nigam Ltd. power stations (Petition No.1035/17).**

RVUN filed this petition on 13.01.2017 for determination of ARR & tariff for KTPS (Unit- 1 to 7), STPS (Unit-1 to 6), CTPP (Unit-1 & 4), DCCPP, RGTPP (Stage- I, II & III), Kalisindh (Unit- 1 & 2) and Mahi Hydel for FY 2017-18 and approval of Annual Performance Review for KTPS (Unit-1 to 7), STPS (Unit -1 to 6), CTPP (Unit-1 &2), DCCPP, RGTPP (Stage- I & II) and Mahi Hydel Power Stations for FY-2014-15 & 2015-16. As on 31.03.2017, petition is pending under the consideration of the Commission.

- 20. Determination of ARR and tariff for Giral Lignite Power Ltd. Unit- 1 & 2 for FY 2017-18 and true up of ARR for Unit-1 for FY 2011-12 to 2013-14 and Unit-2 for FY 2010-11 to 2013-14 (Petition No. 1080/17).**

GLPL filed a petition on 01.02.2017 for determination of ARR & tariff of its Unit- 1 & 2 for FY17-18 and true up of ARR for Unit-1 for FY 2011-12 to 2013-14 and Unit-2 for FY 2010-11 to 2013-14. As on 31.03.2017, petition is pending under the consideration of the Commission.

- 21. Amendment in normative SHR for CTPP Stage-I (Unit- 1 to 4) of RVUN (Petition No. 1089/17).**

RVUN filed a petition on 08.02.2017 under Regulation 94, 95 and 96 of RERC (Terms and Conditions for Determination of Tariff) Regulations, 2014 and Regulation 76 of RERC (Transaction of Business) Regulations, 2005 for amendment in normative Station Heat Rate of Chhabra Thermal Power Station. Public notices with salient features of the petition inviting objections/comments/suggestions were published in the newspapers on 11.03.2017. Commission forwarded the objections/comments/suggestions of the Stakeholders to RVUN for filing its reply. RVUN furnished reply to the same on 30.03.2017 duly serving a copy to Stakeholders. As on 31.03.2017, petition is pending under the consideration of the Commission.

- 22. In Principal approval of Additional Capitalization (R&M) for up-gradation of existing control and HMI system of RGTPP Stage-I & II (110 MW), power station of RVUN (Petition No. 1099/17).**

RVUN filed this petition on 27.02.2017. As on 31.03.2017, petition is pending under the consideration of the Commission.

**23. Aggregate Revenue Requirement and Provisional Tariff for FY 2017-18 for Chhabra Thermal Power Station (CTPP) Stage-II (Unit-5) (Petition No. 1105/17).**

RVUN filed a petition on 17.03.2017. As on 31.03.2017, petition is pending under the consideration of the Commission.

**24. Determination of generic tariff for sale of electricity from wind power plants in the state to Distribution Licensee getting commissioned during FY 2016-17:**

Commission determined generic tariff for wind power plants getting commissioned during FY 2016-17 vide order dated 25.05.2016 as under:

**Tariff for wind power plants getting commissioned during FY 2016-17**

S. No.	Particulars	Tariff (₹/kWh) if AD benefit is not availed	Tariff (₹/kWh) if AD benefit is availed
1	2	3	4
1	Wind Power Plants located in Jaisalmer, Jodhpur & Barmer Districts.	5.76	5.16
2	Wind Power Plants located in districts other than Jaisalmer, Jodhpur & Barmer districts.	6.04	5.42

**25. Determination of Benchmark Capital Cost for Solar PV and Solar Thermal Power Projects applicable during FY 2016-17 and resultant Generic Levellised Tariff, Commission determined generic tariff :**

Commission has determined generic tariff for Solar power plants for FY 2016-17, vide order dated 23.08.16, as under:

**Tariff for solar PV and solar thermal plants for FY 2016-17**

S. No.	Particulars	Tariff (₹/kWh) if AD benefit is not availed	Tariff (₹/kWh) if AD benefit is availed
1	2	3	4
1	Solar Photo Voltaic (PV) Power Plants commissioned by 31.03.2018	5.40	4.85
2	Solar Thermal Power Plants commissioned by 31.3.2019	11.49	10.34
3	Roof Top Solar PV installations and other small solar PV power generation plants to be commissioned by 31.3.2018	5.40	4.85
4	Small Solar Thermal Power generation plants to be commissioned by 31.03.2019	11.49	10.34

**26. Determination of generic tariff for sale of electricity to Distribution Licensee from Biomass, Biogas and Biomass Gasifier based power plants in the State getting commissioned during FY 2016-17 and revised variable charges of the Biomass power plants commissioned during the period 2009-2015 and during FY 2015-16:**

Commission has determined the generic tariff for Biomass, Biogas and Biomass Gasifier based power plants getting commissioned during FY 2016-17 vide order dated 23.08.2016 as under:

**Tariff for Biomass based power plants to be Commissioned during FY 2016-17 and opting Biomass fuel price determine based on recommendation of the State level Committee**

FY 2016-17	Water cooled condenser		Air cooled condenser	
	Without availing Accelerated Depreciation (AD) Benefit	With AD benefit availed	Without availing AD Benefit	With AD benefit availed
Fixed charges(₹/kWh) (Levelling for 20 years)	2.83	2.66	3.08	2.89
Variable Charges(₹/kWh)	4.00	4.00	4.32	4.32
Applicable Tariff(₹/kWh)	6.83	6.66	7.40	7.21

**Tariff for Biomass based power plants to be Commissioned during FY 2016-17 and opting Biomass fuel price based on Indexation Mechanism**

FY 2016-17	Water cooled condenser		Air cooled condenser	
	Without availing Accelerated Depreciation (AD) Benefit	With AD benefit availed	Without availing AD Benefit	With AD benefit availed
Fixed charges(₹/kWh) (Levelling for 20 years)	2.80	2.63	3.05	2.86
Variable Charges(₹/kWh)	3.71	3.71	4.01	4.01
Applicable Tariff(₹/kWh)	6.51	6.34	7.06	6.87

**Tariff for Biogas based power plants**

FY 2016-17	Biogas Power Plants	
	Without availing AD Benefit	With AD benefit availed
Fixed charges(₹/kWh) (Levelling for 20 years)	3.70	3.44
Variable Charges(₹/kWh)	4.12	4.12
Applicable Tariff(₹/kWh)	7.82	7.56

**Tariff for Biomass Gasifier based power plants**

FY 2016-17	Biomass Gasifier based Power Plants	
	Without availing AD Benefit	With AD benefit availed
Fixed charges(₹/kWh) (Levelling for 20 years)	2.56	2.43
Variable Charges(₹/kWh)	3.63	3.63
Applicable Tariff(₹/kWh)	6.19	6.06

The variable charges for Biomass power projects commissioned earlier determined during the period, i.e., FY 2009-15 and FY 2015-16 with the fuel price of ₹ 2875/MT, based on recommendation of State Level Committee, specified as ₹ 3.95/kWh and ₹ 4.27/kWh for water cooled and air cooled condensers respectively with fixed charges remaining the same

as determined earlier through the respective tariff order(s) for the Biomass based power plants commissioned in the relevant year with other terms and conditions stipulated therein being applicable. For Biomass power plant commissioned during FY 2015-16 and having opted indexation mechanism for Biomass fuel price, the variable charges for FY 2016-17 specified as ` 3.66/kWh and ` 3.96/kWh for water cooled and air cooled condenser respectively.

## **Chapter – VI : Various Other Activities**

### **1. State Advisory Committee**

In pursuance of the provisions contained in Section 87 of the Electricity Act, 2003, the Commission has constituted a State Advisory Committee to advise the Commission on:

1. Major questions of policy.
2. Matters relating to quality, continuity and extent of service provided by the Licensee.
3. Compliance by Licensees with the conditions and requirement of their license.
4. Protection of consumer's interest.
5. Electricity supply and overall standards of performance by utilities.

During the year, a meeting of the Advisory Committee was held on 12 July, 2016. The list of the Members of the present State Advisory Committee is at Annexure 'B'.

### **2. Standards of Performance of Discoms**

Section 59(2) of the Electricity Act, 2003 stipulates that the Commission is to publish, at least once a year, the level of performance achieved by the Distribution Companies. The Commission has framed the RERC (Standards of Performance for Distribution Licensees) Regulations, 2014 & prescribed the formats for submission of reports half yearly to the Commission. The reports as submitted by the Discoms are placed on the website of the Commission.

### **3. Commission Website**

The website of the Commission is [www.erc.rajasthan.gov.in](http://www.erc.rajasthan.gov.in) which is being updated regularly.

### **4. Income and Budgeted expenditure**

The source of income of the Commission is mainly Annual license and petition fees. During the year the income of the Commission from above sources was Rs. 1022.19 lacs. Against this the expenditure for the year is Rs. 669.71 lacs.

The Commission has transferred an amount of Rs. 44.39 lacs out of its revenue, into pension trusts, based on Actuarial Valuation.

**5. Sanctioned Posts/ Working strength of the Commission, as on 31.03.2017**

S. No	Name of Post	Pay-Scale	No. of Sanctioned Post	Working
1.	Secretary	37400-67000 +10000	1	0
2.	Director (Tariff)	37400-67000+8700	1	0
3.	Director (Engg)	37400-67000+8700	1	0
4.	Joint Director (T)	15600-39100+7600	2	2
5.	Jt. Director (Law)	15600-39100+8200	1	0
6.	Joint Director (Fin)	15600-39100+7600	1	1
7.	Dy. Director (F&A)	15600-39100+7600	1	0
8.	Dy. Director (T)	15600-39100+6600	4	4
9.	Dy. Director (F)	15600-39100+6600	1	1
10.	Dy. Director (Admn)	15600-39100+6600	1	0
11.	Dy. Director/ Sr. Economic Analyst	15600-39100+6600	1	1
12.	Astt. Director (Tech)	15600-39100+5400	4	4
13.	Astt. Director (Fin)	15600-39100+5400	3	3
14.	P.S. To Chairman	15600-39100+5400	1	1
15.	Sr. P.A.	9300-34800+4800	2	1
16.	P.A.	9300-34800+4200	4	2
17.	Legal Assistant	9300-34800+4200	1	0
18.	Steno Cum Computer Operator	9300-34800+3600	7	1
19.	Executive Assistant (Tech)	9300-34800+3600	4	3
20.	Accountant	9300-34800+4200	1	1
21.	Junior Accountant	9300-34800+3600	2	2
22.	Store Keeper, Cashier, Librarian	5200-20200+2800	2	0
23.	Establishment RD Clerk (LDC)	5200-20200+2400	3	0
24.	Vehicle Driver	5200-20200+2400	2	2
25.	Class-IV	5200-20200+1700	10	8
	Total		61	37

**Chapter – VII: Consumer Affairs**

**1. Consumer Affairs**

The following salient features, relating to the Grievance Redressal Mechanism, are in place:-

- (1) In exercise of the power conferred on it under section 42 (5) of the Electricity Act 2003, the Commission has specified the Regulation for Redressal of Consumer Grievances "RERC (Guideline for Redressal of Grievances) Regulation 2008" notified in March 2008. As per provisions of Regulations, the licensee has established Consumer Grievance Redressal Forums at various levels. According to the Regulations a consumer may approach the appropriate level of forum, excluding the cases under section 126 and section 135 of the Act, as per the jurisdiction.

Presently, 703 nos. of CGRFs are working in the State for redressal of grievances. The consolidated position of Redressal of grievance by various CGRFs for the FY 2016-17 (April 16 – March 17) is as under:-

Sr. No.	Name of the Discom	Name of CGRF	No. of forums	Disposal of Grievances in FY 2016-17				
				Pending at the beginning	Received during period	Total	Redressed	Pending at the end
1	2	3	4	5	6	7	8	9
1	Ajmer	Sub-divisional Forum	187	42	1308	1350	1340	10
		Divisional Forum	45	215	1337	1552	1307	245
		Circle Forum	12	153	1710	1863	1711	152
		Corporate Forum	1	2	36	38	37	1
<b>Sub Total (Ajmer Discom)</b>			<b>245</b>	<b>412</b>	<b>4391</b>	<b>4803</b>	<b>4395</b>	<b>408</b>
2	Jaipur	Sub-divisional Forum	187	75	5139	5214	5002	212
		Divisional Forum	48	294	6090	6384	5871	513
		Circle Forum	13	165	5820	5985	5738	247
		Corporate Forum	1	12	247	259	227	32
<b>Sub Total (Jaipur Discom)</b>			<b>249</b>	<b>546</b>	<b>17296</b>	<b>17842</b>	<b>16838</b>	<b>1004</b>
3	Jodhpur	Sub-divisional Forum	157	0	227	227	227	0
		Divisional Forum	39	139	1092	1231	1180	51
		Circle Forum	12	104	1268	1372	1301	71
		Corporate Forum	1	1	40	41	40	1
<b>Sub Total (Jodhpur Discom)</b>			<b>209</b>	<b>244</b>	<b>2627</b>	<b>2871</b>	<b>2748</b>	<b>123</b>
<b>Grand Total</b>			<b>703</b>	<b>1202</b>	<b>24314</b>	<b>25516</b>	<b>23981</b>	<b>1535</b>

(2) An independent Member is nominated by the Commission in each of the Corporate Level Grievance Redressal Forums of the Discoms.

## 2. Grievance Redressal by Ombudsman

2.1 RERC (Settlement of Disputes by Electricity Ombudsman) Regulations, 2010, relating to functioning of the Electricity Ombudsman, stand notified in the official Gazette of the State.

The consumer is free to approach the Electricity Ombudsman, in case grievance is not redressed by the forum within specified time or consumer is not satisfied with the disposal made by CGRF.

2.2 An independent Ombudsman, namely, Electricity Ombudsman started functioning with effect from 23<sup>rd</sup> September 2010, and the status of the grievances, redressed by the Electricity Ombudsman, during the year 2016-17, is as follows:-

Complaints Brought Forward From FY 15-16	Complaints registered during FY 16-17	Total	No. of cases, Disposed off during FY 16-17	No. of pending cases, at the end of the year 2016-17
5	69	74	66	8



## **Chapter – VIII : Petitions & Appeals before the Commission**

At the beginning of the year 2016-17, 119 petitions were pending, out of which orders in respect of 110 petitions were issued by the Commission upto March, 2017. During the year 436 petitions were received, out of which orders in respect of 332 petitions were issued by the Commission up to March, 2017. Thus, 113 petitions were pending for decision at the end of the year 2016-17.

## **Chapter – IX: Cases in Supreme Court, Appellate Tribunal for Electricity & Rajasthan High Court (Status as on 31.3.2017)**

### **1. Status of the cases in the Supreme Court, New Delhi**

At Supreme Court, New Delhi, 10 numbers of Cases were pending for the decision at the end of the year 2016-17.

### **2. Cases in Rajasthan High Court**

At Rajasthan High Court, Jaipur Bench, out of 52 numbers of total cases, orders in respect of 10 numbers of cases were issued by the court upto March, 2017. Thus 42 numbers of cases were pending for the decision at the end of the year 2016-17.

At Rajasthan High Court, Jodhpur, out of 11 numbers of total cases, orders in respect of 10 numbers of cases were issued by the court upto March, 2017. Thus 1 number of case was pending for the decision at the end of the year 2016-17.

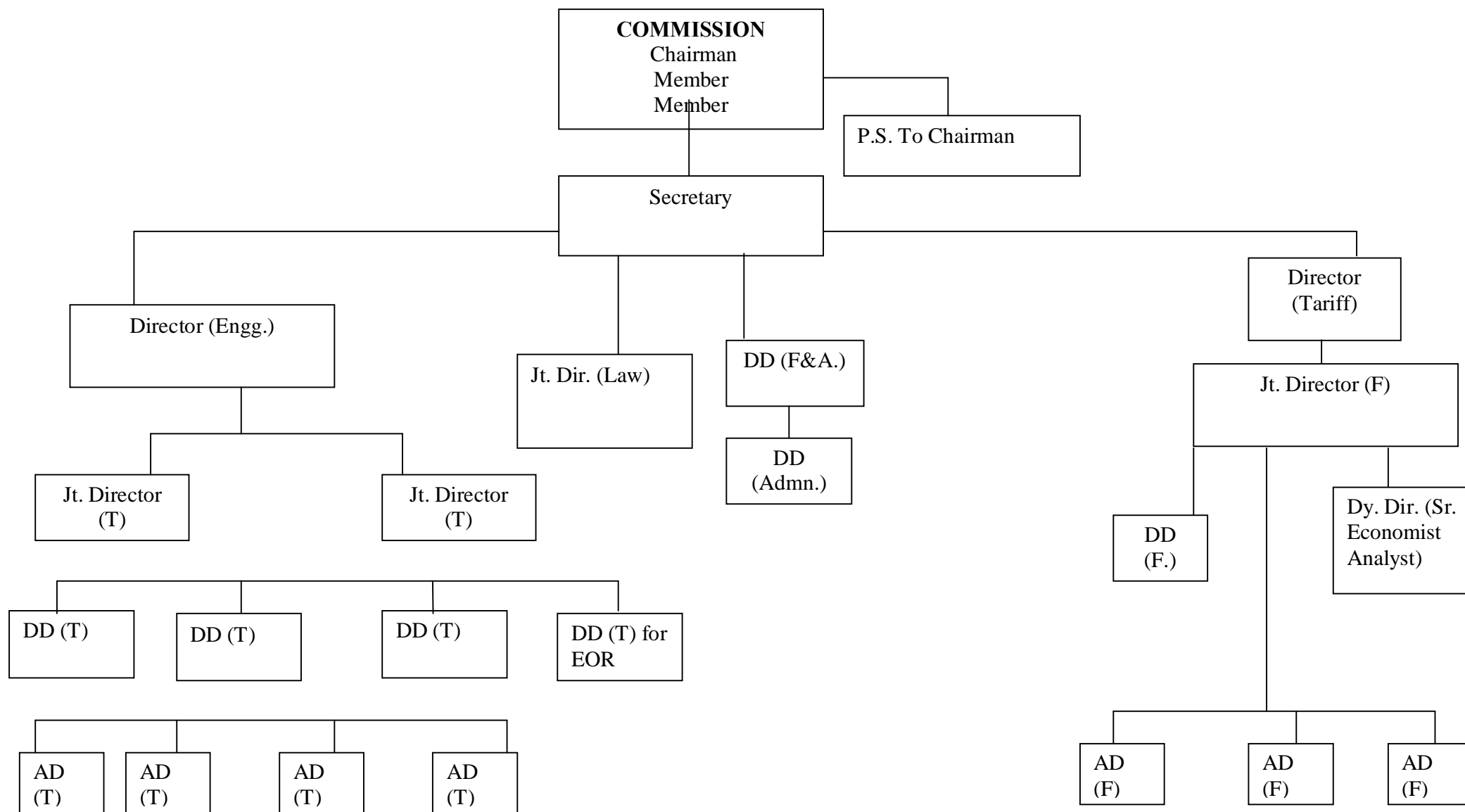
### **3. Status of the cases in the Appellate Tribunal for Electricity, New Delhi**

At Appellate Tribunal, New Delhi out of 40 numbers of total appeals, orders in respect of 7 numbers of appeals were issued by the Tribunal up to March, 2017. Thus 33 numbers of appeals were pending for decision at the end of the year 2016-17.

\*\*\*\*\*



# RAJASTHAN ELECTRICITY REGULATORY COMMISSION (RERC) ORGANISATION CHART





**List of Members of the State Advisory Committee**

<b>S. No.</b>	<b>Name/ Designation of the Member</b>	
1.	Chairman, RERC	Ex-officio Chairman of the Committee
2.	Member (Fin.), RERC	Ex- officio Member
3.	Member (Tech.), RERC	Ex- officio Member
4.	Principal Secretary to the Government, Food, Civil Supplies & Consumer Affairs Deptt, Govt. Secretariat, Jaipur	Ex- officio Member
5.	Principal Secretary to the Government Energy Department, Government of Rajasthan, Govt. Secretariat, Jaipur	Ex- officio Member
6.	The Chairman & Managing Director Rajasthan Vidyut Prasaran Nigam Ltd. Vidyut Bhawan, Jyoti Nagar Jaipur	
7.	The Chairman & Managing Director, Rajasthan Rajya Vidyut Utpadan Nigam Limited, Vidyut Bhawan, Jyoti Nagar Jaipur	
8.	The Chairman, Distribution Companies, Vidyut Bhawan, Jyoti Nagar Jaipur	
9.	The Managing Director Jaipur Vidyut Vitran Nigam Ltd. Vidyut Bhawan, Jyoti Nagar Jaipur	
10.	The Managing Director, Ajmer Vidyut Vitran Nigam Ltd. Vidyut Bhawan, Panchsheel Nagar Makarwali Road, Ajmer	
11.	The Managing Director, Jodhpur Vidyut Vitran Nigam Ltd. New Power House, Basni Jodhpur.	
12.	The Managing Director, Rajasthan Renewable Energy Corporation, E-166, Yudhishtir Marg, 'C' Scheme Jaipur	

\*\*\*\*\*